

How to build a Window Garden with 2 liter bottles

The most important thing to keep in mind is that if you plan this out, your results will be more practical and attractive.

Measure the depth of your window sill. (from the interior wall, to the window glass)

Measure the height from the sill to the head.

A 2 liter bottle is approximately 12.5 inches tall and 4.5 inches wide depending on which brand of soda.

Important Questions to ask before you start:

Do you know how many hours of direct sunlight you receive? And from which direction does the sunlight enter your window? In the morning? In the afternoon? In the evening?

You have to position the tower so it receives the most possible sunlight.

If you plan to use a lot of vertical space (my highest bottle position is around 7ft) how are you going to water?

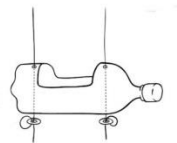
Step stool, chair, trampoline?



Where will your hooks attach? What is your wall made of? Can you drill into it and insert wall anchors? How much space from the hook to the 1st bottle?

Design:

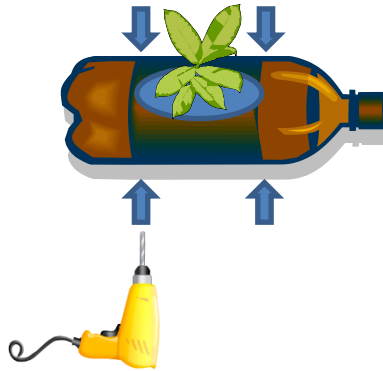
You want to lay out your design on the floor and mark the rope on the tops and bottoms of the horizontal bottle positions. The bottom marking is where the knot will be tied onto a washer as you knit the bottles together.



Mark your bottles so you can make your holes straight up and down and equidistant from each other on each bottle. Ideally every bottle will be the same shape, height, color, (I prefer green) and thickness. You should build a template and measure before you start drilling or cutting.

How to build a Window Garden with 2 liter bottles

The template should include the offset hole for the soil and plant, and the holes for the clothes line.



Keep the cap on when you're drilling and be VERY careful when you're cutting out the hole with box cutters or scissors.

Now it's time to knit the bottles together.

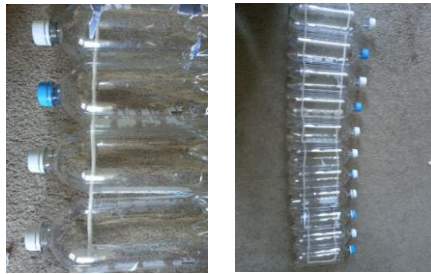
Make sure the 100% cotton clothesline (they're available in varying thickness) can be thread into a straw (it will be your needle)



You can either make one loop, or tie a knot at the very top to hold the two sides together (this is much easier)

Starting at the top, thread the straw with the line in it through the two vertical holes and gently pull through until you've reached the knot marking. Slip on a washer and tie a knot. The washer will be on the bottom of the bottle when it's hanging. It's there to prevent any of the plastic from tearing. Continue until you've thread through all your bottles, and leave enough extra line to allow for the run-off to either flow into a reservoir or planter.

How to build a Window Garden with 2 liter bottles



Now do the same on the other side.

Everything even and level?

If so, tie off the top lines with a secure knot and hang the tower on the wall.

Fill the bottles with your preferred soil.

Plant seedlings or seeds and follow care instructions.